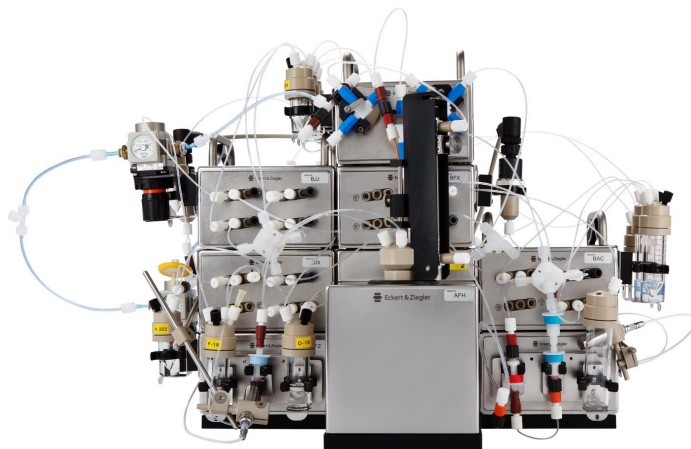


Modular-Lab Standard

Versatile equipment for research purposes

Modular-Lab Standard

Modular-Lab Standard is a fully automated system for radiochemical synthesis.



Description

Modular-Lab Standard has been specifically designed to allow versatile radiochemical development and production. The system enables custom synthesis processes to be assembled from a set of unit operation modules. The small, sealed and stainless steel modules are stacked and connected by process tubing and by a single electrical cable. Please refer to our Modular-Lab Module Overview (DOK-00014) for a detailed look at the available modules and their specifications. An intuitive graphical interface is used to design and control the synthesis process.

Advantages

Modular-Lab Standard's unique modular approach combines the speed and safety of a remote, fully automated system with the flexibility to configure syntheses for novel tracers. Cleaning and sanitation routines can be programmed to take place between runs or overnight. With this multifunctionality, Modular-Lab Standard supports research as well as routine production. Disposable components such as valves, tubing, cartridges and others are standard, off-the-shelf units and can be exchanged as needed for different applications.

Modular-Lab Standard can be applied to a wide range of compounds and isotopes. The modules can be arranged to fit even very small hot cells.

Versatility

Available modules include a Peltier/Heater reaction system with solid-state temperature control from $-40\text{ }^{\circ}\text{C}$ to $+150\text{ }^{\circ}\text{C}/220\text{ }^{\circ}\text{C}$. A wide variety of valve modules, instruments for temperature, pressure and radiation detection, a compact semipreparative HPLC module, analytical HPLC, TLC modules, and many others are available as well. The intuitive user interface is easy to program by drag and drop of graphical symbols and adheres to today's regulatory requirements. Parameters such as temperature, activity, UV detector readings, flow rates, or valve settings can be monitored easily in one window. Reports containing all relevant data and information are created automatically after each run.

Safety Functions

Reliable, automated synthesis, with remote monitoring provided as necessary through the graphical computer interface, eliminates the need for hands-on operation and can significantly reduce radiation exposure to lab personnel.

Application Examples

We offer a wide variety of chemical reactions including customized synthesis processes according to your needs. This includes but is not limited to $[^{18}\text{F}]\text{FEC}$, $[^{18}\text{F}]\text{FDG}$, $[^{18}\text{F}]\text{Fluoroethyltyrosine}$, $[^{18}\text{F}]\text{Flumazenil}$, $[^{18}\text{F}]\text{MISO}$, $[^{11}\text{C}]\text{Choline}$, $[^{11}\text{C}]\text{Methyl Iodide}$, $[^{131}\text{I}]\text{MIBG}$, $^{68}\text{Ga-DOTA}$ peptides and ^{64}Cu applications. Additionally a collection of representative publications of our customers are available on [our website](#).

Modular-Lab Standard

Technical Data of a Basic Exemplary System

Main Unit	
Dimensions of the Peltier Reaction Module (PRM)	130 x 248 x 192 mm (W x D x H); Weight: 7.8 kg
Dimensions of the Vial Holder Module (VHM)	130 x 152 x 113 mm (W x D x H); Weight: 1.5 kg
Dimensions of the Valve Modules	Approx. 130 x 150 x 113 mm (W x D x H); Weight: 2.0 kg
Power supply	115 V ~ 60 Hz or 230 V ~ 50 Hz
Power consumption	Standard 480 W, 2 x bus 1,050 W, extension to 2,100 W possible
Environment temperature	+10 °C to +40 °C
Environment humidity	Max. 70 % rel.
Module Characteristics	
PRM equipped with	Camera, stirrer, lift, activity detector, pressure detector and temperature sensor Sigradur vial (optional)
Reactor volume	Variable from 1 – 24 ml
Cooling/heating	Peltier elements (-40 °C to +150 °C) or heating foil (room temperature to 220 °C)
Liquid transport	Vacuum pump, syringe pump, peristaltic pump and/or pressure
Unit Control	
Software	Modular-Lab Software
Interfaces	Ethernet

Module dimensions include handles.

Please note: Modular-Lab Standard makes use of locally available, off-the-shelf tubing, connectors, vials and valves.

All available modules and their properties are described in a [separate document](#) (DOK-00014), to provide the full picture of Modular-Lab flexibility and wide range of applications.

Eckert & Ziegler Eurotope GmbH

Robert-Rössle-Strasse 10
13125 Berlin
Germany
Phone: +49 30 941084 197
Fax: +49 30 941084 470

medical@ezag.de
www.medical.ezag.com

Your contact in USA & Canada: Eckert & Ziegler Radiopharma, Inc.

25 Upton Drive
Wilmington, MA 01887
USA
Phone: + 1 508 497 0060
Fax: + 1 508 497 0061

infoRAU@ezag.com
www.radiopharma.com