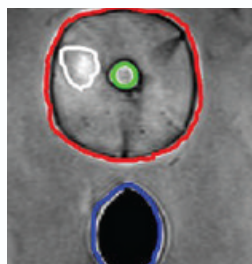




## UROLOGY TRAINING PHANTOMS

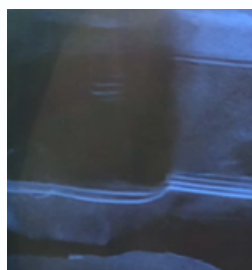
### PROSTATE PHANTOMS



MRI Fusion



Transperineal Biopsy



Cryotherapy



Brachytherapy

#### Prostate Phantom Contains:

- Prostate (46 cc volume)
- Urethra
- Rectal wall with rectal hump
- Seminal vesicles
- Bladder base (optional)

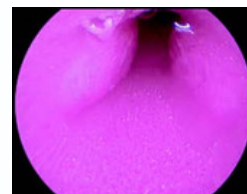
#### Procedures:

- Biopsy: fusion, TP, transrectal
- LDR + HDR Brachytherapy
- Rectal spacer insertion
- Cryotherapy
- HiFu

### BLADDER OUTLET OBSTRUCTION PHANTOM



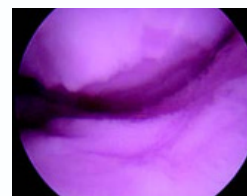
Bladder Phantom



Obstructed Urethra



Morcellation



Enucleation

#### Bladder Outlet Obstruction Phantom Contains:

- Penile urethra
- Verumontanum
- Obstructing prostatic urethra
- Bladder neck
- 500 cc capacity
- Dual drainage system
- Reusable case and funnel

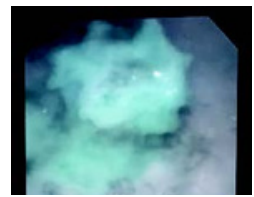
#### Procedures:

- Laser enucleation and vaporization
- TURP and TUIP
- Rezum
- UroLift and iTind
- Cystoscopy

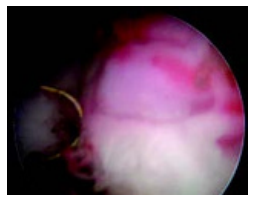


## UROLOGY TRAINING PHANTOMS

### BLADDER TUMOR RESECTION PHANTOM



Visualization



Resection

#### Bladder Tumor Resection Phantom Contains:

- Penile urethra
- Verumontanum
- Non-obstructing prostatic urethra
- Bladder neck
- 500 cc capacity
- Dual drainage system
- Reusable case and funnel
- Customized tumors +/- fluorescence

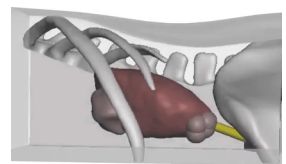
#### Procedures:

- TURBT and biopsy
- Resection with fluorescence
- Cystoscopy

### KIDNEY PATHOLOGY PHANTOMS



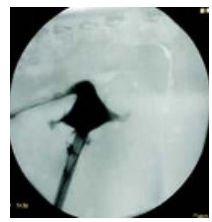
Kidney Phantom



Anatomic Features



Percutaneous Access



Percutaneous Imaging

#### Kidney Pathology Phantom Contains:

- Synthetic left flank including skin, muscle, spine, 3 ribs and upper pelvic brim.
- Kidney has two tumors, ureter and hollow renal pelvis and calyces.
- Includes kidney stone for lithotripsy
- Ureter accessible through lower hip for ureteroscopy and drainage

#### Procedures:

- Percutaneous kidney biopsy
- Renal pelvis puncture
- Percutaneous nephrolithotripsy
- Ureteroscopy and lithotripsy
- Focal tumor ablation
- Renal ultrasound training



Kidney Tumor Biopsy



Renal Pelvis Puncture